

# IRIS INSTRUMENTS



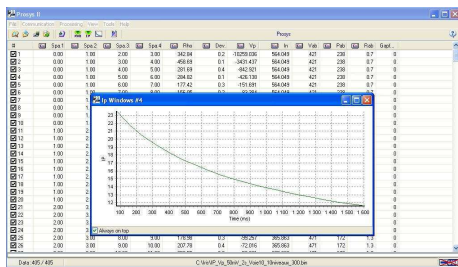
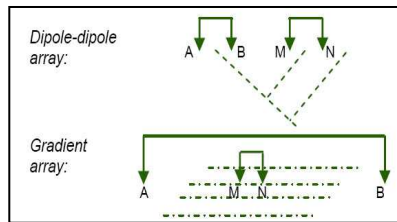
## ELREC Lite

Two channel hand held

- 2 simultaneous channels
- 20 chargeability windows
- low-weight, hand-held

### ELREC Lite receiver MAIN FEATURES

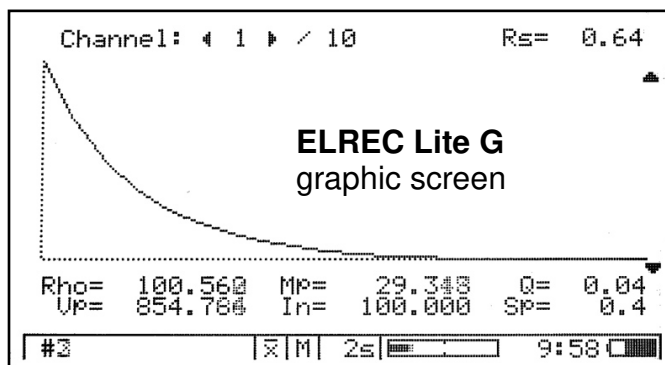
- The **ELREC Lite low-weight hand-held receiver** has been designed for high productivity surveys, with 2 simultaneous measurement channels
- Its **automatic synchronization process** let it work without any link with the transmitter
- The **Induced Polarisation (IP) decay curve** is analyzed with 20 programmable windows for a higher definition of the IP chargeability waveform



PROSYS II software for data transfer, filtering, plotting and exporting to an interpretation software



Screen heater battery for low temperature operations



### ELREC Lite

#### TECHNICAL SPECIFICATIONS

- two simultaneous channels
- twenty chargeability windows
- computation of apparent resistivity, average chargeability, standard deviation
- electrode arrays: dipole dipole, pole dipole, pole pole, Schlumberger, Wenner, gradient
- stacking process for signal enhancement
- SP compensation with linear drift correction
- link to PC for data transfer
- PROSYS II PC software for data filtering
- input impedance: 100 Mohm
- memory: 44 800 readings
- max input voltage: 15V
- chargeability accuracy: 0.6% typ
- time domain waveform, Ton = 0.5, 1, 2, 4, 8s
- programmable chargeability windows
- electrode ground resistance measurement
- plastic weatherproof (IP 66) case
- rubber protection
- dimensions: 265 x 130 x 55 mm
- weight: 0.9 kg
- internal battery: Li-Ion 2.2 Ah
- heater external battery: 12V, 2Ah in a belt bag, for low temperature operation
- battery charger: 110/220 V, 50/60 Hz
- operating temperature range: -30°C to +50°C

## ELREC Lite G

Same specifications as ELREC Lite, except the screen which is graphic, with display of decay curve during acquisition

INDUCED POLARIZATION RECEIVER

Geodatos, Brasil, 20m spacing dipole dipole, 5m shift

