

# IRIS INSTRUMENTS

## Electre II Software

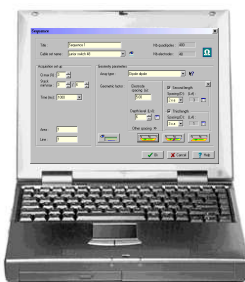
The **ELECTRE II** software is a program allowing to create automatically some 2D profiling sequences of measurement for *IRIS Instruments* resistivity-meters working in Multi-Electrode mode.

Recommended minimal PC configuration:

- Windows® XP
- 1 GHZ Microprocessor
- RAM memory: greater than 256 Mb
- 1280 x 1024 resolution screen
- 1 Serial or USB port for communication

The main functions of the **ELECTRE II** software are the following ones:

- Automatic creation of sequences according to the standard electrode arrays
- Automatic creation of sequences according to the roll along process
- Import of any type of sequence "txt" files for specific purposes
- Graphical visualization of the report points of the sequence
- Indication of the estimated investigation depth
- Uploading of the sequence to the unit



*Electre II software*

Sequence uploading

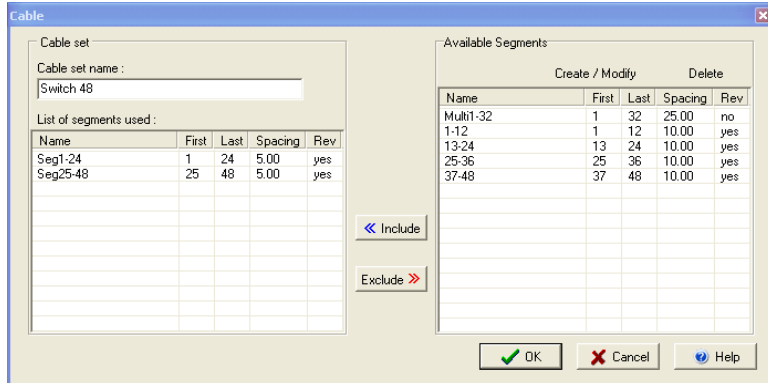


*SYSCAL Resistivity-meter*

Software for Multi-Electrode systems

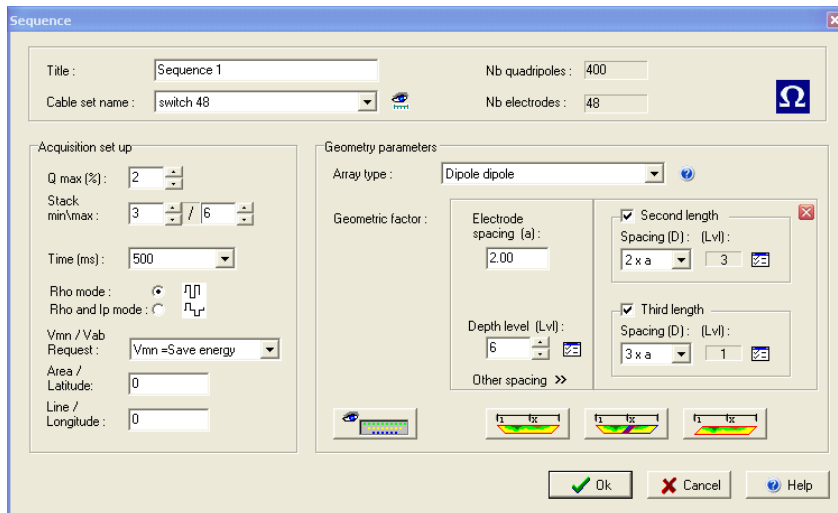


# Electre II Software



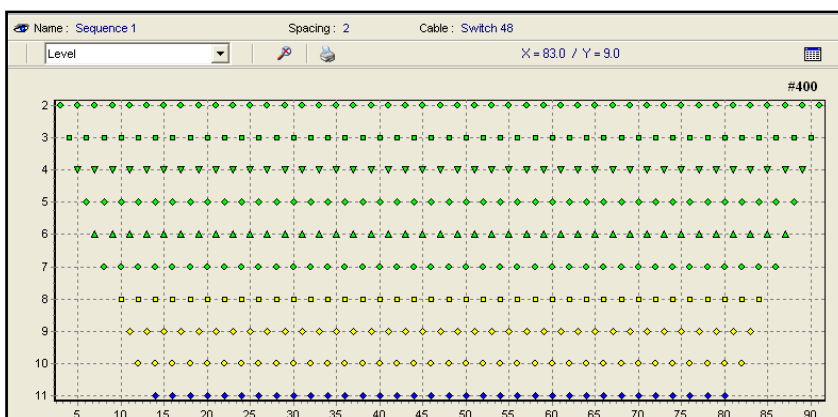
*Cable definition*

The **ELECTRE II** software allows to create sequences of measurement in regards to the configuration of your Multi-electrode system. The first step is to select a cable set, which is made of several segments.



*Master window: sequence creation*

Once the cable set has been specified, one has to choose the acquisition parameters together with the geometric parameters of the sequence (electrode array, electrodes spacing, depth levels) ; then, the sequence can be created automatically.



*Graphical picturing of the sequence*

The distribution of the report points of the measurements that will be done together with the total number of data points, can be seen from the graphical window, before loading the sequence into the unit.

Specifications subject to change without notice BR\_ELII\_GB\_V1